

Disaster Information Line:

1-855-627-5365

Town of Pincher Creek Resident Evacuation Plan

April 2018

For additional information relating to disaster planning and evacuation, please contact;

Town of Pincher Creek
(Ph) 403-627-3156
962 St John Avenue
E-Mail: reception@pinchercreek.ca
www.PincherCreek.ca

www.pinchercreek.ca/request
Choose category “disaster”



Town of Pincher Creek
962 St. John Ave (Box 159) Pincher Creek, AB T0K 1W0
Phone 403 627 3156 Fax 403 627 4784
reception@pinchercreek.ca www.PincherCreek.ca

TABLE OF CONTENTS

Introduction	
Purpose	2
Background	2
Evacuation Zoning	
Zone Info	3
Overall Zone Map	3
Zone 1	4
Zone 2	4
Zone 3	5
Zone 4	5
Zone 5	5
Zone 6	5
Zone 7	6
Zone 8	6
Zone 9	6
How to Evacuate	
Stages of Evacuation	7
When to Evacuate	9
What to Bring	9
Communicate (Magnet)	10
Where to Go	10
How to Get There	11
Registration	12
Important Extras	
Road Closures	12
Re-Entry	13
Pre-Planning Information	13
Information During an Event	14
Conclusion	14

INFORMATION DURING AN EVENT

For all information during an event, to register with the reception center and/or inquire about re-entry planning, please call our disaster contact number at;

1-855-627-5365

CONCLUSION

The nature of any disaster scenario is difficult to anticipate due to the uncertainty of what our community may be faced with. While we do preplan to the best of our abilities, anticipating as many various scenarios as we can imagine, the reality is that we will not know what details we may be faced with until they are before us.

For this reason, we have set up and maintain the disaster response number that you have seen throughout this booklet. By using this number, and the information above, you will know what to expect in a disaster as well as where to go, and how to reach us for more information.

The information contained within this booklet has been compiled utilizing resources and support from the Town of Pincher Creek, Alberta Emergency Management Agency, and RCMP. We thank all involved agencies for their input and support in development of this plan.

RE-ENTRY

Once it is safe to do so, the town will initiate its re-entry plan to support residents returning to the community safely.

Again, we ask for your understanding that community access may be limited for your safety and ask that you wait until the re-entry process is initiated before returning to the community. Some factors that may contribute to re-entry are the re-installation of essential services including medical response care, hospital access, policing services and fire rescue. Also, in many cases where a mandatory evacuation is ordered by the province or municipality, public utilities such as gas, water, telephone and electricity may be disconnected. These utilities and essential services all require a set start up process to ensure safe contact and access to them.

For information during an event, regarding community access, road closures, and re-entry timelines, please call our toll-free disaster information number at **1-855-627-5365**. Or check an official communication source, as listed above, for re-entry directions.

PRE-PLANNING INFORMATION

The key to facilitating a successful evacuation is pre-planning. The contents of this evacuation manual are designed to help support your understanding of the steps and process that the Town will take as well as to help you in creating your personal evacuation strategy.

Please contact the Town Office directly if you have additional questions regarding your evacuation plan or would like to notify the Town of any additional support that you anticipate needing in the event of an evacuation.

Town of Pincher Creek
(Ph) 403-627-3156
962 St John Avenue
E-Mail: reception@pinchercreek.ca
www.PincherCreek.ca

www.pinchercreek.ca/request
Choose category “disaster”

INTRODUCTION

PURPOSE

Throughout the past 10 years, the province of Alberta has seen a significant increase in the volume and severity of weather related disasters that impact municipalities. The Town of Pincher Creek has always been committed to the implementation of a safe and organized evacuation of our residents, at a moment's notice, in the face of a disaster evacuation.

During 2017, events like the Kenow Fire, Crowsnest Pass Fire and Winter Storm Event in early 2018 were displays of just how quickly an unanticipated event can impact our region. It is an essential component of a quick and timely evacuation that our residents understand the events that will transpire once an evacuation is called for.

The information in this booklet has been prepared, to help ensure that you know what to do in an evacuation to get yourself and your loved ones safely out of the danger zone!

BACKGROUND

The approach to municipal disaster planning has come a long way throughout the past decade. Where once an unusual storm event was quite uncommon, we are now being faced with the reality of Fire, Flood, Snow, even Tornado activity within the province of Alberta with more regularity. While municipalities have traditionally included some sort of disaster evacuation plan in their response portfolio's, recent years are seeing expansion and depth being added at rates never seen before.

The face of municipal disaster preparedness is also changing, in that evacuation response plans are not being kept behind closed doors, allowing citizens to play an active role in identifying their evacuation needs and creating an individual plan that will work alongside the formal planning. This approach supports resource sharing where needed, especially between municipalities as is being seen in our own Regional Emergency Management Organization.

The following information is from our municipal evacuation plan and has been compiled for this document in April of 2018. We encourage residents to reach out to our response planning team with any additional questions or planning support that residents may need!

EVACUATION ZONING

ZONE INFO

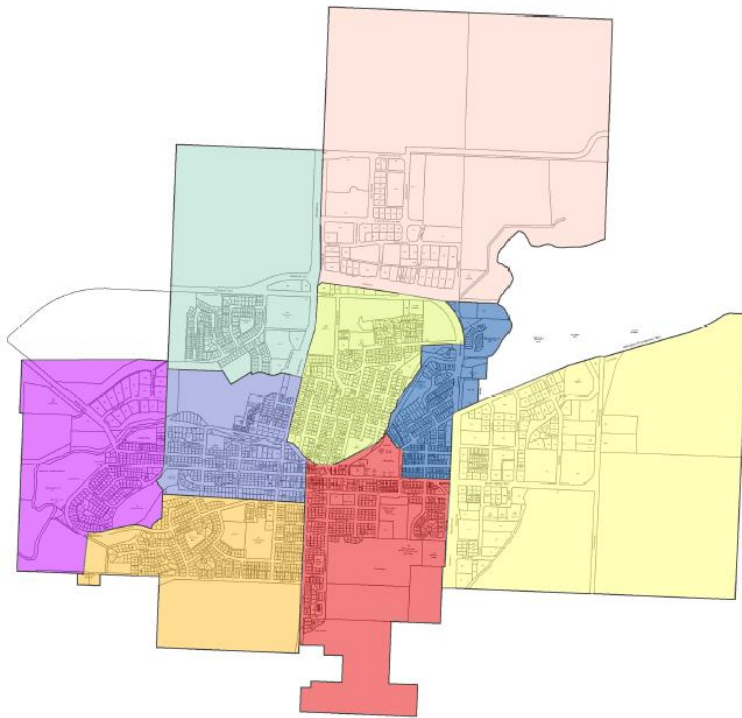
In order to ensure an orderly, time effective evacuation, the Town of Pincher Creek has been divided into nine (9) evacuation zones. These zones have been identified geographically and have been numbered for identification purposes.

Some examples of zones that you will want to familiarize yourself with are where your home, work, daycare, schools and/or seniors homes are located. It is also important to identify zone locations of individuals you might be helping to evacuate.

Please review the maps below and identify which evacuation zones are relevant to your personal evacuation plan.

NOTE: ZONE NUMBERS DO NOT INDICATE PRIORITY. Zones will be evacuated by highest assessed risk and not numerically.

OVERALL ZONE MAP



REGISTRATION

The safety and security of our residents is our primary focus during any disaster activity and emergency evacuation.

When you enter any one of our evacuation reception centers, you will be asked to complete a registration form, regardless of your intention to stay at the center or not.

Do I have to go to the reception center?

No, you may have family, friends or a hotel outside the community that you will choose to stay with. If you are not attending the reception center, we ask that you call our toll-free registration number at **1-855-627-5365**.

Why is evacuation registration important?

While you are not legally required to register, we want to know that you and your family have safely made it out of the evacuation zone! We track the residences that have been identified as evacuated in order to support evacuation efforts door to door as well as to inform neighboring communities of a potential significant influx of residents if several identify evacuating to a specific location. This is also used to support family members and first responders who may be enquiring into your safety or into the evacuation status of your property.

IMPORTANT EXTRAS

ROAD CLOSURES

In the event of a mandatory evacuation, there will be road closures in place which will prevent you from reentering the community until the evacuation order has been lifted and the threat has subsided.

During a disaster scenario, access to the community is reduced in this manner for the safety of residents as well as first responders, as such, we ask that you respect the required access barriers and not attempt to bypass the road closures.

When a reception center is activated, you can utilize one of the communication methods listed in the “when to evacuate” section or phone our disaster response number at 1-855-627-5365 for directions regarding where to go.

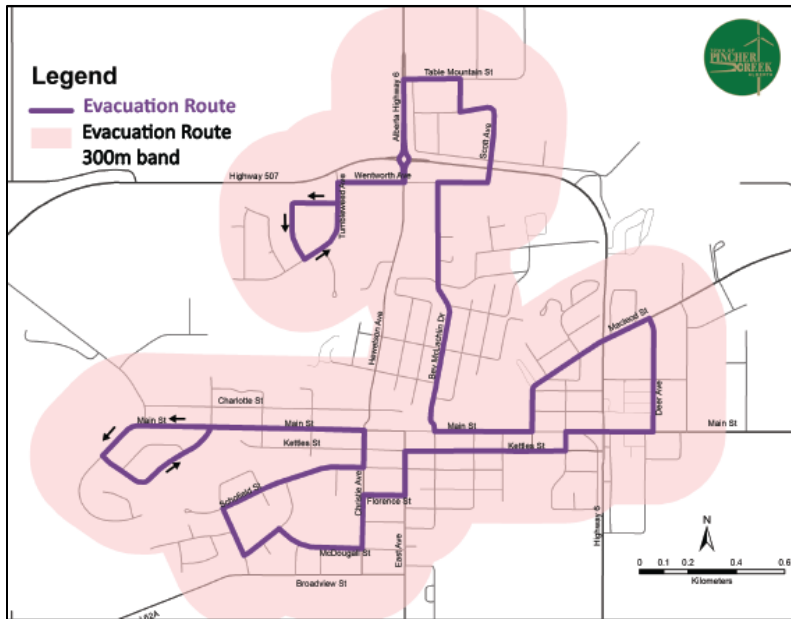
Should the in-town reception center need to evacuate to another community, directions on where to go and how to get there will be provided on site, through one of our approved communication methods and/or via our disaster response number at 1-855-627-5365.

HOW TO GET THERE

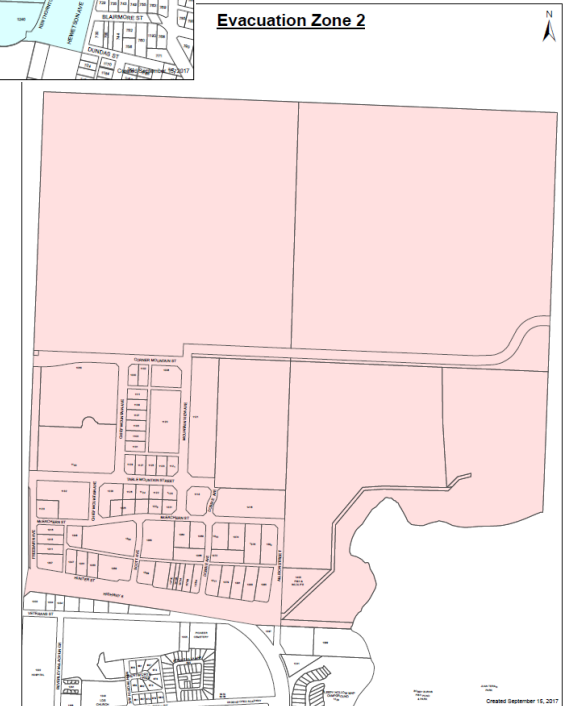
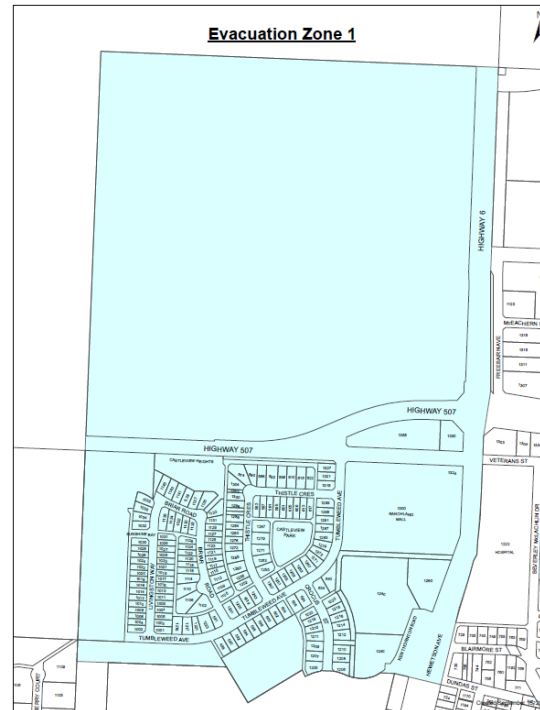
In the event of an evacuation, you will be asked to leave the evacuation area and relocate a safe distance away. This area can be of your choosing (ie. the home of a friend or relative) or to one of our established reception centers. If you do not have transportation to get yourself to a reception center, please get yourself to a location along our “evacuation route” and evacuation support will pick you up.

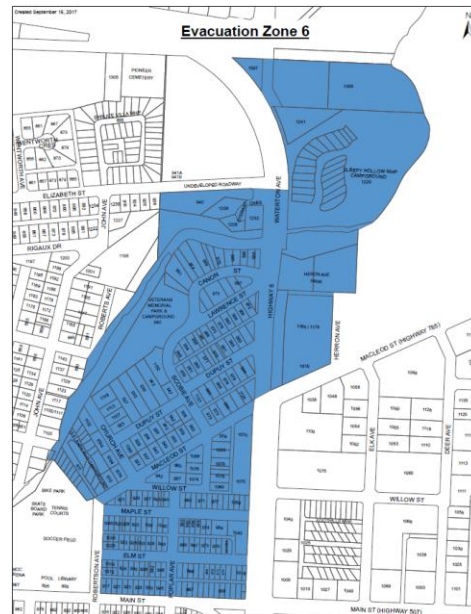
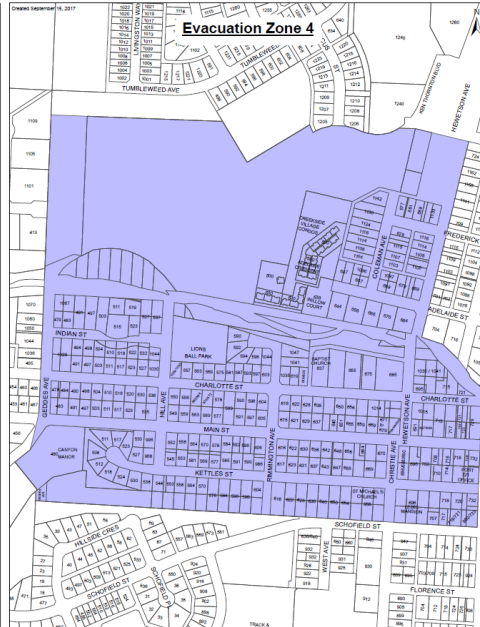
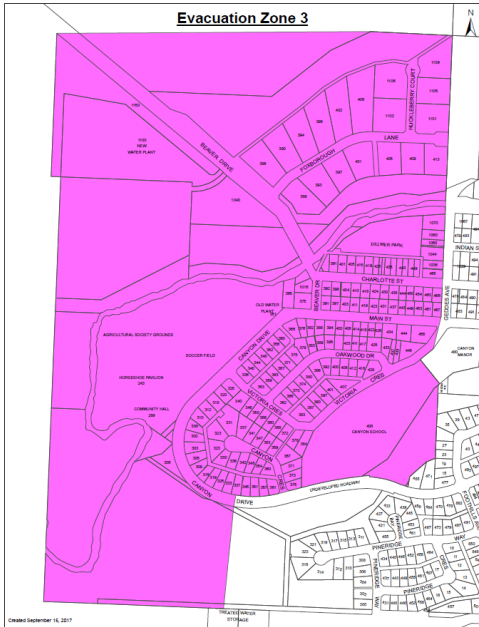
When you get to the route, please continue walking along the designated route line in the direction of the evacuation center and make yourself visible to transportation support that will be traveling the route offering transportation support.

For information regarding reception center locations, please call 1-855-627-5365, and/or follow directions from official communication sources identified above.



INDIVIDUAL ZONE MAPS





COMMUNICATE (MAGNET)

During a mandatory evacuation, support for evacuating residents will be provided in the form of roaming patrols who will be sent to the evacuation zones and will be checking that residences have been safely evacuated.

One vital component to this process is communication! Where a home is found to be locked and there is no indication of whether it's occupants have safely evacuated or not, response personnel may have to gain access in order to verify that no one is trapped in the home requiring assistance. Communicating the safe evacuation of your property to response personnel will not only eliminate the necessity to access your home to conduct this essential safety check but will also support the response team in this process, reducing the time they spend in the danger zone and allowing increased resources to those residents who need help.

Communication can be as simple as a piece of paper taped to the front door notifying responders that the home has been evacuated.



I HAVE EVACUATED

Do you have:

<input type="checkbox"/> 72 hour emergency kit	<input type="checkbox"/> Wallet and personal documents
<input type="checkbox"/> Child supplies (diapers, bottles etc)	<input type="checkbox"/> Pet supplies (food, kennel etc)
<input type="checkbox"/> Prescriptions, prescription list & pharmacy contact	<input type="checkbox"/> Preplanned evacuation items

DON'T FORGET:
For more information and to register at the reception centre, please call:

1- 855 - 627 -5365

The image to the right is an example of the Pincher Creek Evacuation Magnet. This magnet can be stored on the back of metal exterior doors and placed on the front if evacuating and can be pinched in the door jamb of those exterior doors that are not metal.

A pamphlet with specific information on the evacuation magnet is available for pick up at the Town Office along with your evacuation magnet.

WHERE TO GO

The Town of Pincher Creek has access to three (3) in town reception center locations, which location is used will be dependent upon a number of variables. Our reception center locations are as follows;

- Vertical Church - 1200 Ken Thornton Boulevard, Pincher Creek, AB T0K 1W0
- Community Hall - 287 Canyon Dr, Pincher Creek, AB, T0K 1W0
- Town Hall Gymnasium - 962 St. John Ave, Pincher Creek, AB, T0K 1W0

WHEN TO EVACUATE

There are multiple ways that the Town of Pincher Creek will communicate the need to evacuate with residents.

Website - www.pinchercreek.ca is the official website of the Town of Pincher Creek and information contained on this site are kept as up to date and accurate as possible utilizing data compiled from all of our available resources.

Social Media - The Town of Pincher Creek maintains social media profiles on both Facebook @TownofPincherCreek and Twitter @town_of_pc

Alberta Emergency Alert (AEA) - The Town will utilize the official Alberta Emergency Alert system to communicate information and provide status updates during emergency events. Emergency alert information can be found www.emergencyalert.alberta.ca, official AEA notification apps are also available for both iPhone and Android for free.

Emergency Service Siren - In circumstances where a mandatory evacuation is required. You will be alerted to a significant event through use of an emergency siren, which is based at the community fire hall.

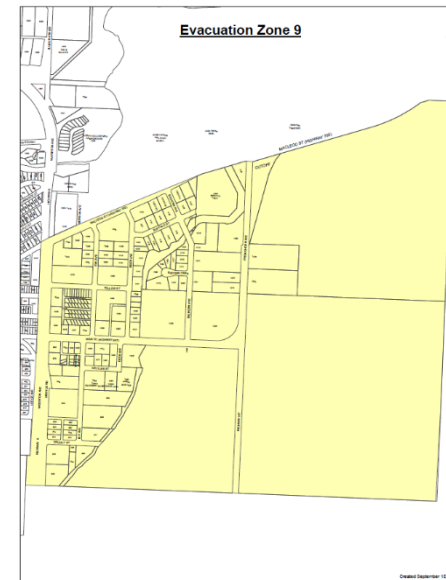
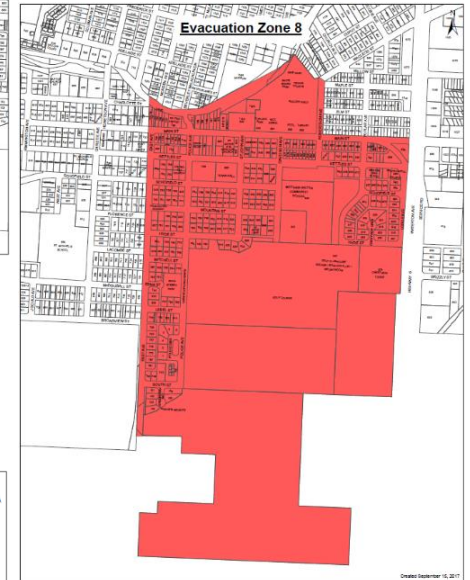
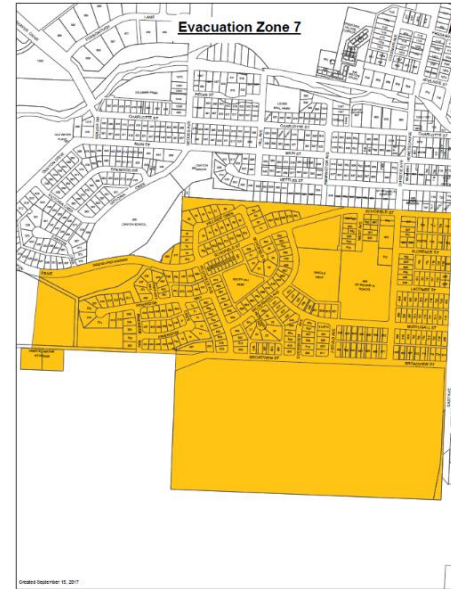
To ensure that you are receiving accurate information in the event of an emergency. Please be sure to verify that the information source you are following is an official account of the Town of Pincher Creek.

WHAT TO BRING

It is recommended that you have a plan in place which identifies all of the items that you will need to bring with you if you are evacuated. Here are some suggestions of items to have prepared to grab at a moment's notice;

- | | |
|--|--|
| <input type="checkbox"/> 72 Hour Emergency Kit | <input type="checkbox"/> Personal Documentation |
| <input type="checkbox"/> Prescriptions | <input type="checkbox"/> Passport |
| <input type="checkbox"/> Prescription List | <input type="checkbox"/> Child Supplies (Diapers, Bottles, Stuffed Toys, etc.) |
| <input type="checkbox"/> Pharmacy Contact | <input type="checkbox"/> Bottled Water |
| <input type="checkbox"/> Physician Contact | <input type="checkbox"/> Snacks |
| <input type="checkbox"/> Veterinarian Contact | <input type="checkbox"/> Pet Prescriptions |
| <input type="checkbox"/> Pets | <input type="checkbox"/> _____ |
| <input type="checkbox"/> Wallet | <input type="checkbox"/> _____ |
| <input type="checkbox"/> Photo Albums | <input type="checkbox"/> _____ |
| <input type="checkbox"/> Keepsakes | <input type="checkbox"/> _____ |
| <input type="checkbox"/> Preplanned Evacuation Items | <input type="checkbox"/> _____ |

**** Secure all firearms and valuables prior to leaving your residence****



HOW TO EVACUATE

STAGES OF EVACUATION

There are four (4) phases of evacuation that the town will go through during a disaster scenario;

1. Heightened Readiness (if time allows)

This is where the Town identifies a scenario that may have the potential to impact Town residents. Examples of scenarios that would activate the heightened readiness phase are weather forecasts, communication from emergency services, RCMP or the province notifying of conditions favourable for potential disaster activity, or disaster activity throughout other municipalities in Southern Alberta that may require the support of our resources.

Often times, the state of heightened readiness passes without incident. As soon as conditions show potential for impact upon the community, the Town will send a Public Warning.

2. Public Warning

This is the stage where the Town will alert residents to conditions that we are monitoring. Examples of public warning notifications are often seen during an event which is impacting a neighbouring municipality. If, for example, a municipality up stream is experiencing localized flooding, we will send a “Public Warning” to inform residents that we are keeping an eye on conditions and providing preliminary information specific to current conditions.

Notification methods for the public warning;

- Town of Pincher Creek Website
- Official Town of Pincher Creek social media outlets.
- Possible Alberta Emergency Alert

3. Voluntary (recommended) Evacuation

Voluntary evacuation notice is issued when the threat to the community is not yet imminent but show that the conditions or circumstances exist in the near future which may trigger a mandatory evacuation. Upon notification of a voluntary evacuation, it is recommended that you start your personal evacuation plan and remove yourself from the evacuation zone to a safe location.

For localized evacuations, this may be another location within Town, for a community wide evacuation, this may be a neighbouring community.

Notification methods for Voluntary Evacuation;

- Alberta Emergency Alert
- Local radio and media outlets
- Town of Pincher Creek Website
- Official Town of Pincher Creek social media outlets.

4. Mandatory Evacuation

A mandatory evacuation order is issued when danger is imminent, and conditions exist that seriously endanger the lives of those within a defined area. All residents within the defined evacuation zone are then “strongly urged” to leave the area immediately. Any person who refuses to leave when a Mandatory evacuation notification is issued, will not be forcibly removed from their residence, however, all public services are suspended during a mandatory evacuation and those choosing not to leave may not be rescued or provided with other emergency response. First Responders, RCMP and/or Military support will be on hand to help facilitate the “mandatory evacuation” process

Notification methods for Mandatory Evacuation;

- Community Notification Siren at Fire Station
- Alberta Emergency Alert
- Local radio and media outlets
- Town of Pincher Creek Website
- Official Town of Pincher Creek social media outlets.